



## ABOUT NEW TOWN, KOLKATA

New Town, the future CBD of West Bengal and Eastern India, has been designed with an idea to accommodate the population and traffic growth in the years to come. Being holistically planned and developed, huge stretches of the urban landscape have been earmarked to accommodate large lakes, a rowing course, golf course, outdoor recreation areas & parks, landscaped canals, urban forestry and horticulture.

Best planned IT destination of Eastern India, IT/ITES SEZ "Infospace" is operational. International hotel brands are also coming up in close proximity to Uniworld City. Also in the pipeline are some Commercial & Shopping complexes in the area. Rabindra Tirtha and the newly set up Eco-Tourism Park are the new attractions in the area. The New Town Police Station close to Uniworld City is also operational.

New Town has premium health centers such as Tata Cancer Research Institute nearby. Another 2 world-class multi specialty hospitals are on the cards. With New Town expressway connecting EM Bypass and VIP Road, Salt Lake and NH-34, Dum Dum Station is less than 9 kms from Uniworld City, and the Airport is just 10 minutes away.

With 4000 happy families already a part of Uniworld City, Kolkata - it surely is an oasis of tranquility.



Note: The layout, building plans, and specifications of buildings, complex and the apartments are tentative and subject to variations - decisions as deemed appropriate by the Company or as directed by any competent authority. Furniture layout shown in the Brochure is only indicative of how the Club can be used. Dimensions given in the club plans are minimum dimensions (excluding the plant) of the layout. All dimensions are rounded off and original variations may occur in the process of construction as per Architect's advice.

BENGAL  
unitech  
UNIVERSAL

City Office:  
Bengal Unitech Universal Infrastructure Pvt. Ltd. 22, Camac Street,  
Block-C, 4th Floor, Kolkata - 700016.  
Ph.: +91 33 2289 2000 | www.unitechgroup.com

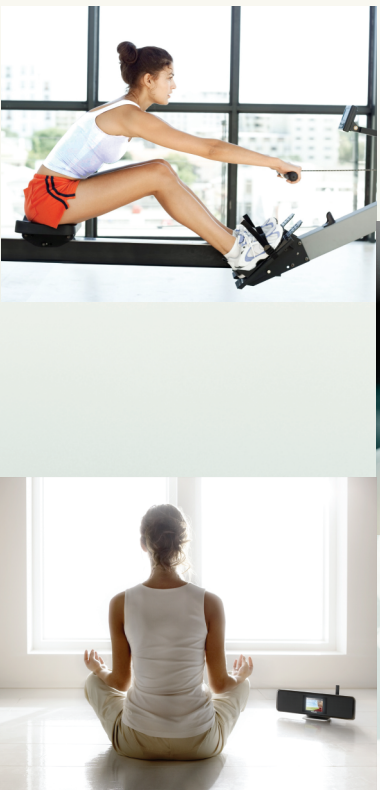
rise  
above  
the  
ordinary

Air  
Uniworld City, New Town, Kolkata



## AMENITIES AND FACILITIES AT UNIWORLD CITY

- Swimming Pool with sit out
- Kid's Splash Pool
- Spa room
- Banquet facility
- Gymnasium
- Multi-media room
- Steam and Sauna
- Multi cuisine cafe
- Kid's play area
- Indoor games room
- Business Center
- Area for Aerobics and Yoga
- Common Lounge area



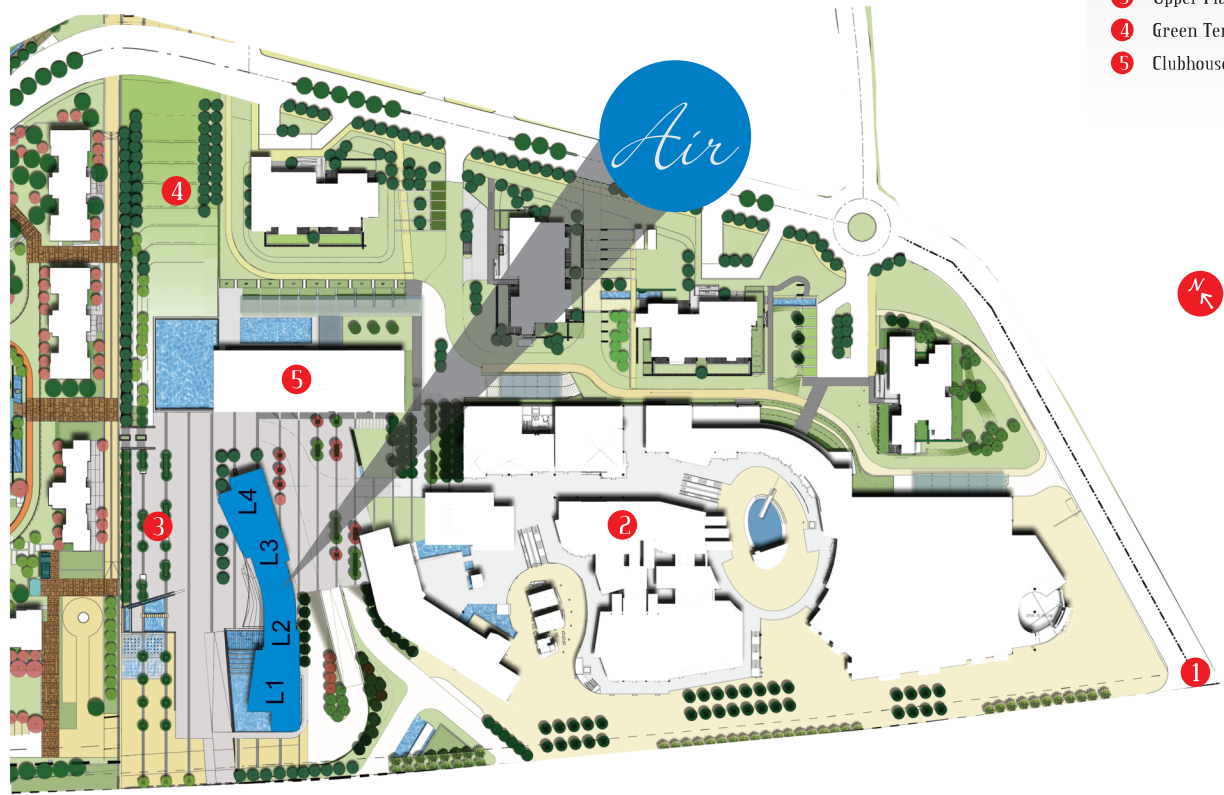


The slim & tall 40 storey luxury towers will take you closer to the skies.  
Adopting innovative technology with G+39 floors  
with ample parking spaces and an exclusive health club for you to unwind.  
An architectural and engineering marvel!



This is an artist's impression

## MASTER PLAN

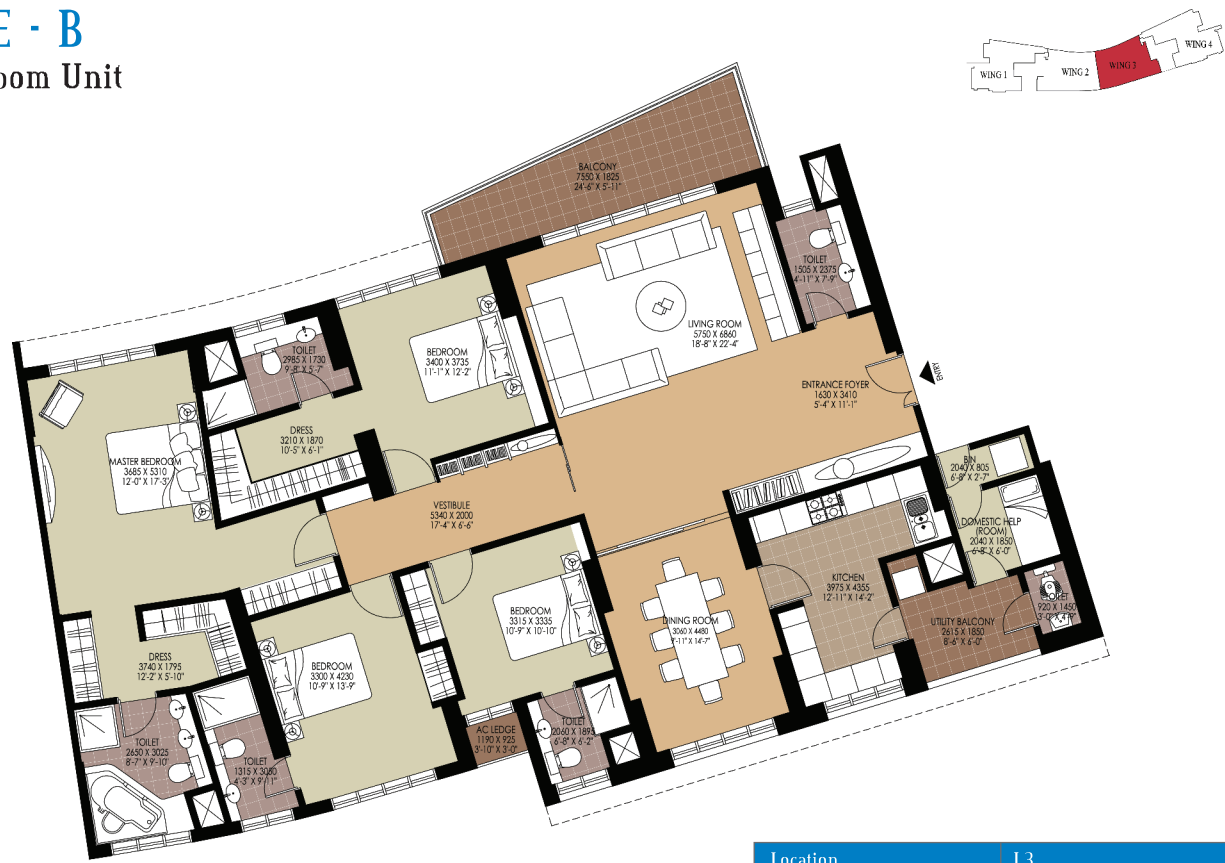


## TYPE - A 4 Bedroom Unit



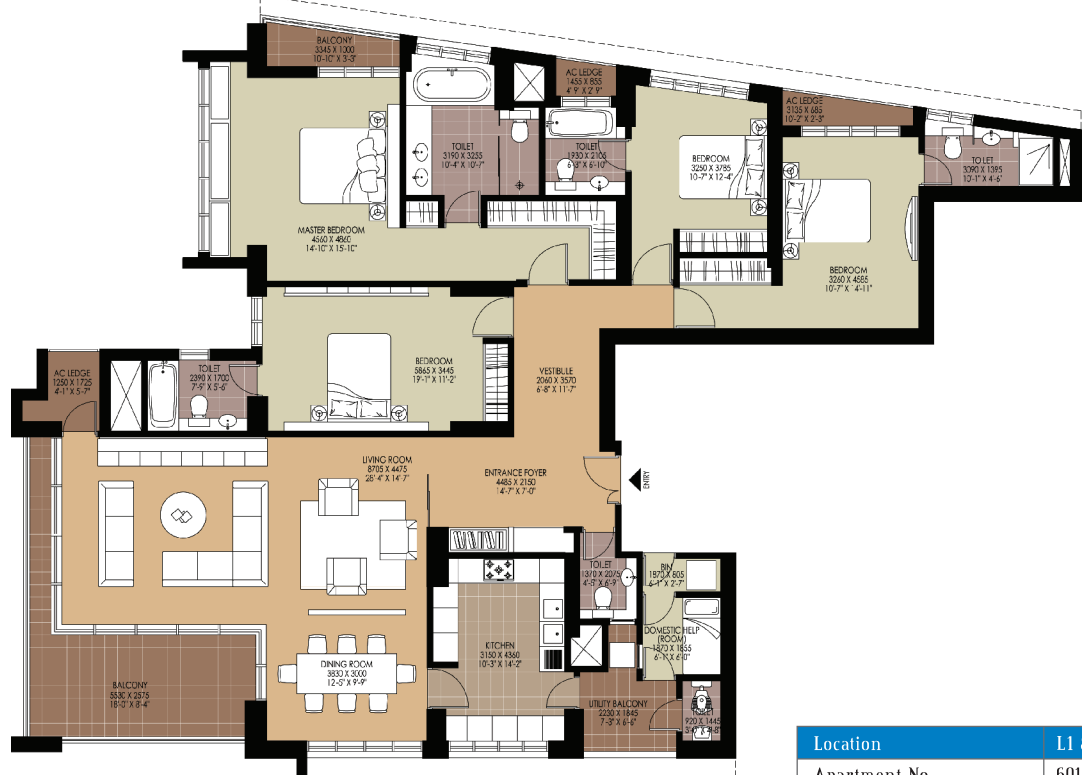
Location	L2
Apartment No.	602 to 2002 & 3802
Super Area (sq.ft.)	3348
Super Area (sqm.)	311.14

## TYPE - B 4 Bedroom Unit



Location	L3
Apartment No.	603 to 2003 & 2203 to 3803
Super Area (sq.ft.)	3348
Super Area (sqm.)	311.14

## TYPE - D 4 Bedroom Unit



Location	L1 & L4
Apartment No.	601 to 2001 & 2201 to 3801 604 to 2004 & 2204 to 3804
Super Area (sq.ft.)	3702
Super Area (sqm.)	344.06

## SPECIFICATIONS

<b>Structure - Walls</b>	— Earthquake resistant RCC framed construction with infill brick wall
<b>Wall Finish - Internal</b>	
Living/Dining/Bed Rooms	— Painted in pleasing shades of acrylic emulsion paint
Servant's Room	— Painted in oil bound distemper
Lift Lobbies	— Selected marble/granite/vitrified cladding & acrylic emulsion paint
<b>Wall Finish - External</b>	— Combination of stone & textured paint finish
<b>Flooring</b>	
Living/Dining/Master Bedroom	— Imported marble
Other Bedrooms	— Laminated wooden flooring
Servant's Room	— Ceramic tiles
Lift lobbies	— Selected granite/marble/vitrified tiles
<b>Kitchen</b>	
Flooring	— Ceramic tiles
Wall Finishes	— Ceramic tiles up to 2" above working platform, rest of the wall in acrylic emulsion paint
Others	— Granite counter with stainless steel sink with drain board
<b>Powder Room/Toilets</b>	
Walls	— Selected ceramic tiles up to ceiling level
Floorings	— Imported marble in master bathroom & anti skid ceramic tiles for other bedrooms
Fittings	— Granite/marble counter, white sanitary fixtures, single lever CP fittings Bath tub with jacuzzi fittings in toilets of master bedroom His & her sinks in master bedroom toilet
<b>Internal Doors</b>	— Seasoned hardwood frames with European style moduled shutters
<b>Windows</b>	— Powder coated/anodized aluminium glazing
<b>Electrical</b>	— Copper electrical wiring throughout in concealed conduit with provision for light points, T.V & Telephone sockets with protective M.C.B's
<b>Air conditioning</b>	— Provision of copper conduits and drainage pipes for split air conditioning
<b>Power back-up</b>	— 100% power back-up
<b>Main Lobby</b>	— Video door phone, air conditioned lobby & waiting area with designer furniture



This is an artist's impression