

# *Shopping • Food • Entertainment*



Gardens Galleria  
South City Rae Bareilly Road,  
Lucknow



Gardens Galleria

Gardens Galleria is a combination of shopping & entertainment that matches the best in the world.

Promoted by India's leading real estate developer and designed by the architect who is behind global success stories such as Pollok Shopping Centre, Glasgow and Coppergate Shopping, York; Gardens Galleria promises to be a holistic shopping cum entertainment experience.



Gardens Galleria  
South City Rae Bareli Road,  
Lucknow

## Project Snapshot

Site Location	:	Gardens Galleria Rae-Bareli Road, Lucknow
Plot Area	:	2.2 acres
Total Leasable Area	:	1.5 lakh s.ft.
Parking Capacity	:	300 cars +
Number of Stores	:	75*

*\* Subject to change*



Gardens Galleria  
South City Rae Bareli Road,  
Lucknow

## *Fun Filled Shopping Experience*

- Over 75 stores
- 4 Screen multiplex
- Multi-cuisine food court
- Fine dining, restaurants, f & b and cafe's
- Multi brand mix retail





# *Unitech's Retail Projects*



## THE GREAT INDIA PLACE, NOIDA

- Part of 147 acres of mixed use development comprising entertainment, retail and hospitality
- Over 10,00,000 sq. ft. of GLA  
Designed by Callison Inc., USA
- 240+ outlets
- Annual footfalls: 10 mn. (Approx)
- Annual shopping: US\$ 300 mn. (Approx)



Gardens Galleria  
South City Rae Bareilly Road,  
Lucknow



## METRO WALK, DELHI

- Part of 62 acres of entertainment destination with an Amusement Park
- Over 200,000 sq. ft. of GLA
- India's first organized open air shopping centre
- Designed by FORREC, Canada
- 100+ outlets
- Annual footfalls: 3 mn. (Approx)
- Annual shopping: USD 75 mn. (Approx)



## GURGAON CENTRAL, GURGAON

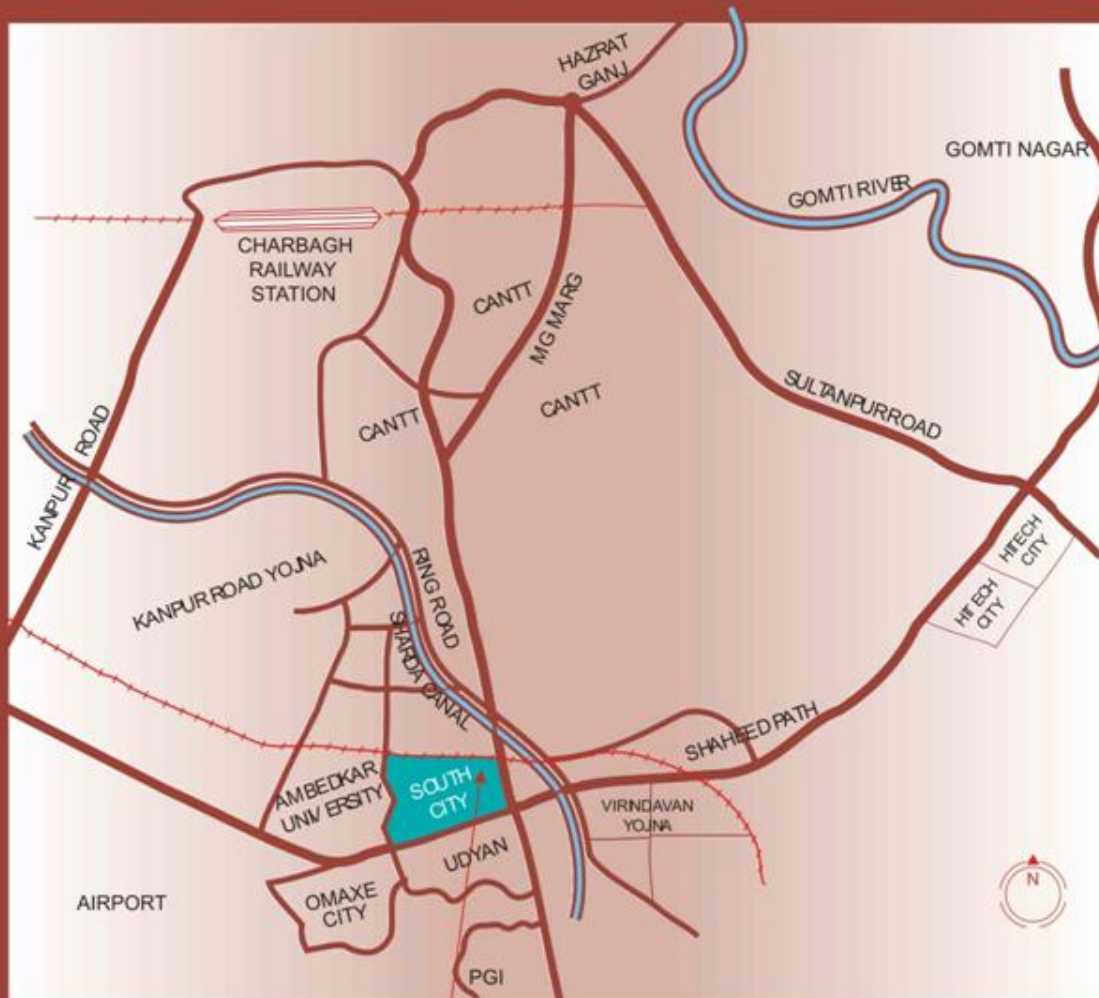
- A retail development of over 1.40 lac sq. ft.
- Designed by Callison, USA
- Multi-branded single store concept
- Operated by Future Group



**Gardens Galleria**  
South City Rae Bareli Road,  
Lucknow

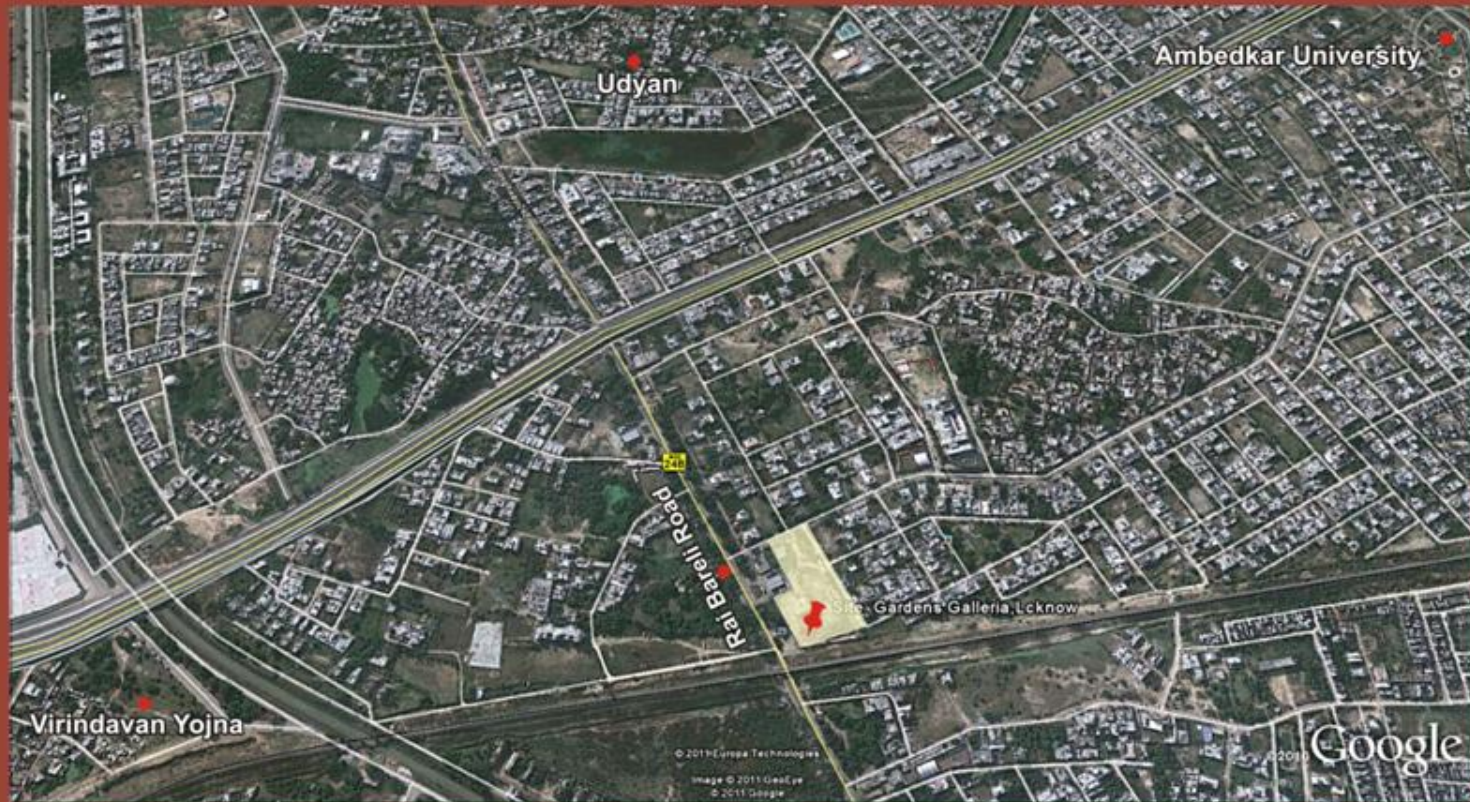


# Location Advantages



- 8 kms from Charbagh Railway Station.
- Site abutting Ambedkar University.
- 3 kms before SGPGI.
- Connected to Amausi Airport via Shaheed Path Expressway.
- 6 kms from Alambagh Inter State Bus Terminus.
- 9 kms from Hazratganj.
- Large cash-rich catchment area of Alambagh and Kanpur Road (approx. 1.5 km.)
- No other cinema hall within a radius of 7 km.
- First shopping mall on the N.H. 24-A (Lucknow - Rae Bareilly - Allahabad Road).
- Upcoming modern plotted development having a catchment population of more than 1.5 million
- South City, Udyan, LDA Sharda Nagar, UPAWP Virindavan Yojna, Kanpur Road Yojna and other private townships in the vicinity.

# Location



Gardens Galleria, Lucknow



Gardens Galleria  
South City Raj Barli Road,  
Lucknow



# Location & Catchment



- ① Gardens Galleria, Lucknow (Upcoming)
- ② Phenix Mall, Lucknow
- ③ Fun Republic, Lucknow
- ④ Wave Mall, Lucknow
- ⑤ River Side Mall, Lucknow
- ⑥ Saharaganj Mall, Lucknow



Gardens Galleria  
South City Rae Bareilly Road,  
Lucknow

# USP

- 8 Kms. from Charbagh Railway Station.
- Site abutting Ambedker University.
- 3 Kms. before SGPGI.
- 9 Kms. from Hazratganj.
- Large cash-rich Catchment area of Alambagh & Kanpur road (approx 1.5 km.)
- First shopping mall on the N-24-A (Lucknow-Raebareli-Allahabad road).
- Upcoming modern plotted development havin a catchment population of more than 1.5 million.
- South city, Udyan, LDA Sharda Nagar, UPAWP Vrindavan Yojna, Kanpur road Yojna and private township in the vicinity.
- Connected to Amausi Airport via Shaheed Path Expressway.



# *Operational Malls of Lucknow*

## **The West end Mall**

Location : Gomti Nagar

Developer : Chaddha Group

GLA : 3.1 Lacs Sqft

Operational : 2004

Status : 100% Occupancy

## **Major Brands**

Fab india

McDonalds

Wills

Woodland

Levi's

Globus

Westside

Reliance Digital

Land Mark





# *Operational Malls of Lucknow*

## **Sahara Ganj Mall**

Location : Hazratganj

Developer : Sahara India Commercial Corp

GLA : 4.4 Lacs Sqft

Operational : 2005

Status : 100% Occupancy

## **Major Brands**

Pantaloons

Provogue

Wills Lifestyle

Woodland

Levi's

Mufti

Louis Phillipe

Big Bazaar

Home Town

KFC

McDonalds



**Gardens Galleria**  
South City Rae Bareli Road,  
Lucknow

# *Operational Malls of Lucknow*

## **Fun Republic Mall**

Location : Gomti Nagar

Developer : E-city Entertainment(I) Pvt Ltd

GLA : 5.8 Lacs Sqft

Operational : 2007

Status : 100% Occupancy

## **Major Brands**

Shoppers Stop

Spencers

Jambo Electronics

Home Shop

Cross Roads

Max

Reebok

Wills

Blackberry

Metro



**Gardens Galleria**  
South City Rae Bareli Road,  
Lucknow

# Catchments

**Location****Population**

South City

28,000

Eldeco Udyan

30,000

Sharda Nagar

2,50,000

Vrindavan Yojna

3,20,000

Omaxe City

40,000

Telibagh

1,25,000

Kanpur Road Yojna

10,00,000



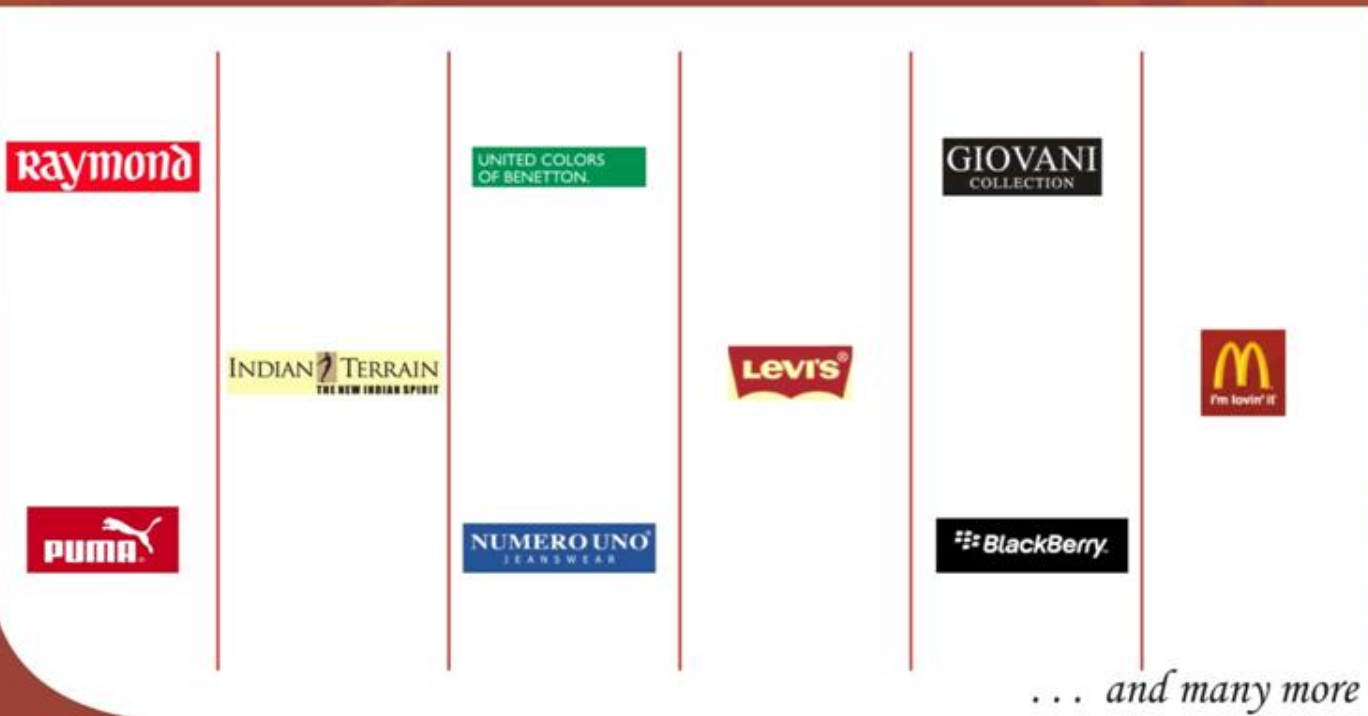


## *Young Catchments*

Place	Distance
● S.G.P.G.I.	3 Km.
● Sardar Patel Dental Medical College	1 Km.
● Ambedkar University	1 Km.
● Manipal College of Engineering	1.5 Km.
● Maharana Pratap Engineering College	3 Km.
● Cantt. Area	2 Km.



## Brands Already Signed In





Perspective view of Gardens Galleria, Mohali



Gardens Galleria  
South City Rae Bareilly Road,  
Lucknow



# *Project Highlights*



- Only mall on Rae Bareli Road, Lucknow
- Over 1.5 lakh sq.ft. gross leasable area
- Designed by Allan Berwick of UK
- 3 floors of retail and F & B spaces
- Over 825 seats 4 screen multiplex
- Food court with outdoor seating
- Height of shops over 4 meters



**Gardens Galleria**  
South City Rae Bareli Road,  
Lucknow

# Amenities



- Double basement parking space for more than 300 cars
- Round the clock water supply
- Professional property management
- Standby generators / 100% power back-up
- Fire protection system
- Central air conditioning system
- Separate passenger and service lifts / elevators and escalators
- Provision for public address voice communication system
- Loading / unloading facilities for goods



Gardens Galleria  
South City Rae Bareli Road,  
Lucknow

# *Thank You*

**Unitech Limited**

3rd Floor, Y.M.C.A Building,

13, Rana Pratap Marg, Lucknow - 226001

Tel: +91-522-2209393/96/97 Fax: +91-522-2209343

Email: [sales@unitechgroup.com](mailto:sales@unitechgroup.com)

[www.unitechgroup.com](http://www.unitechgroup.com)

The layout and building plans, specifications, elevations of the building(s) are tentative and are subject to variation. Unitech may effect such variations, additions, alternations deletions and/or modifications therein as it may, at its sole direction deem appropriate and fit or as may be directed by any competent authority. No complaint regarding design, layout or accommodation shall be entertained by Unitech.



**Gardens Galleria**  
South City Rae Bareli Road,  
Lucknow