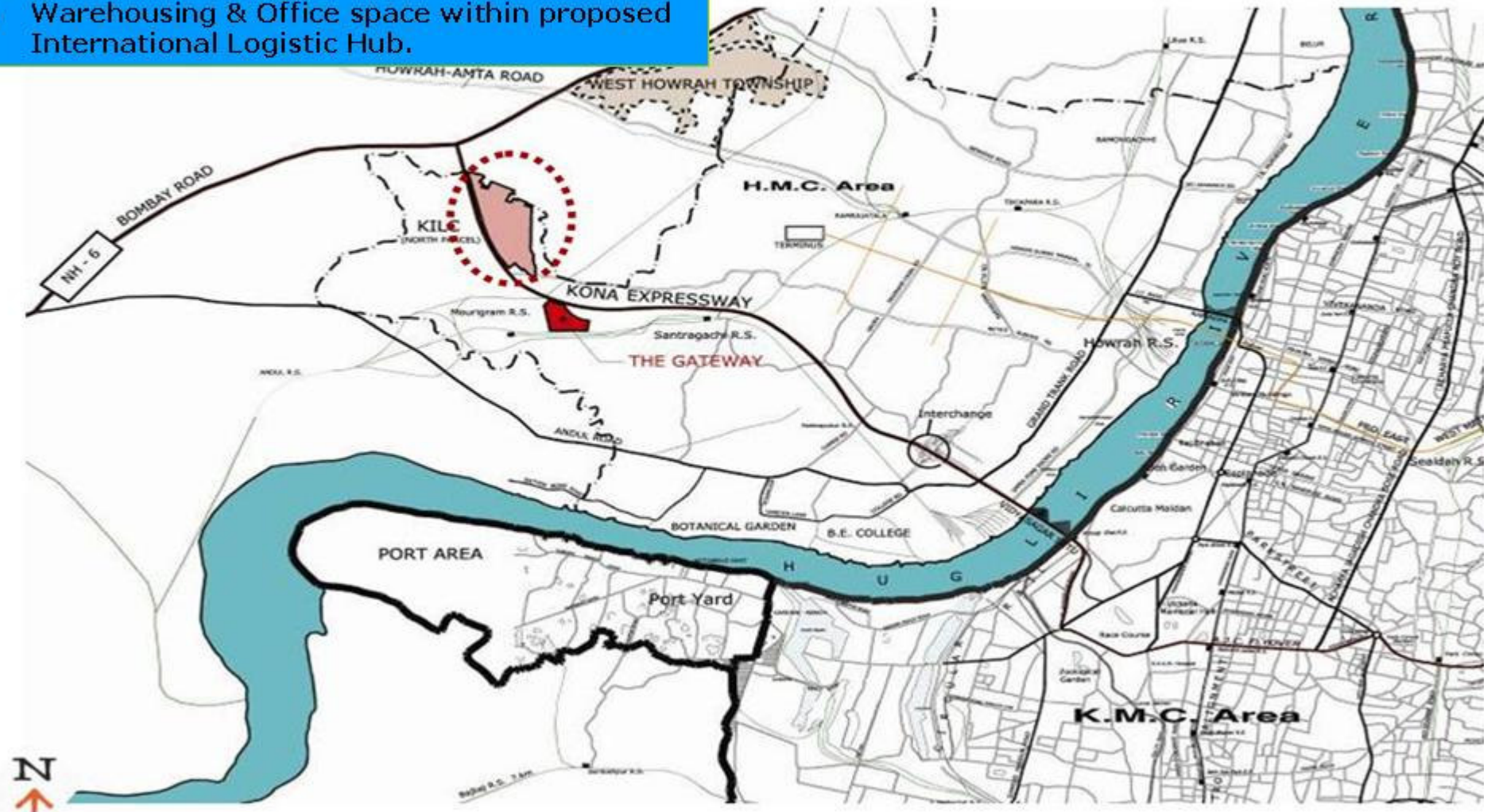


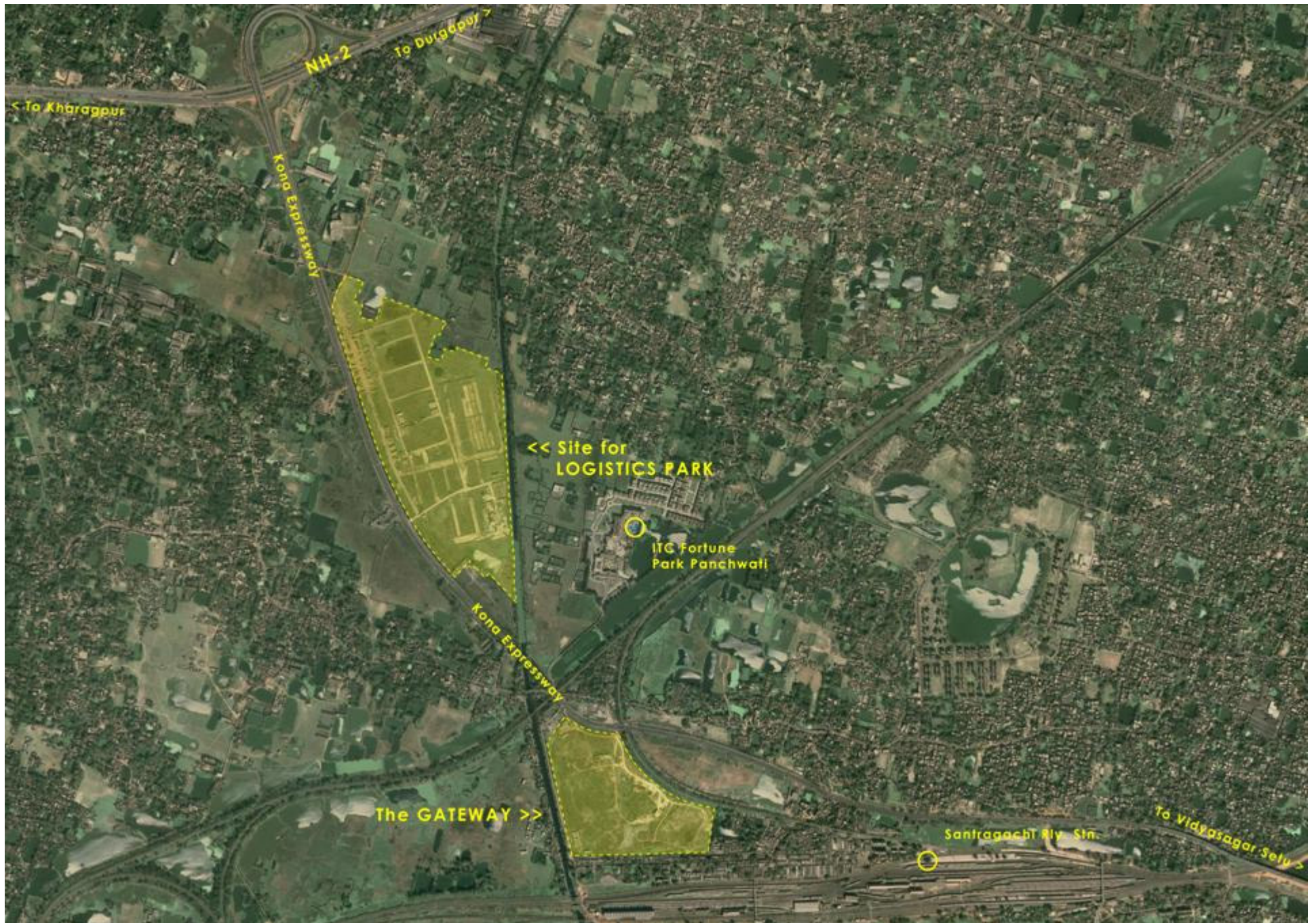


KOLKATA INTERNATIONAL
LOGISTICS CITY
HAVELOCK PROPERTIES LIMITED

1. 10 Kms from CBD, Kolkata
2. At the junction of Kona Highway & NH6
3. Warehousing & Office space within proposed International Logistic Hub.

LOCATION PLAN of
KONA LOGISTIC HUB







KOLKATA INTERNATIONAL LOGISTICS CITY
TOTAL LAND AREA = 73.6451 ACRES

KONA EXPRESSWAY



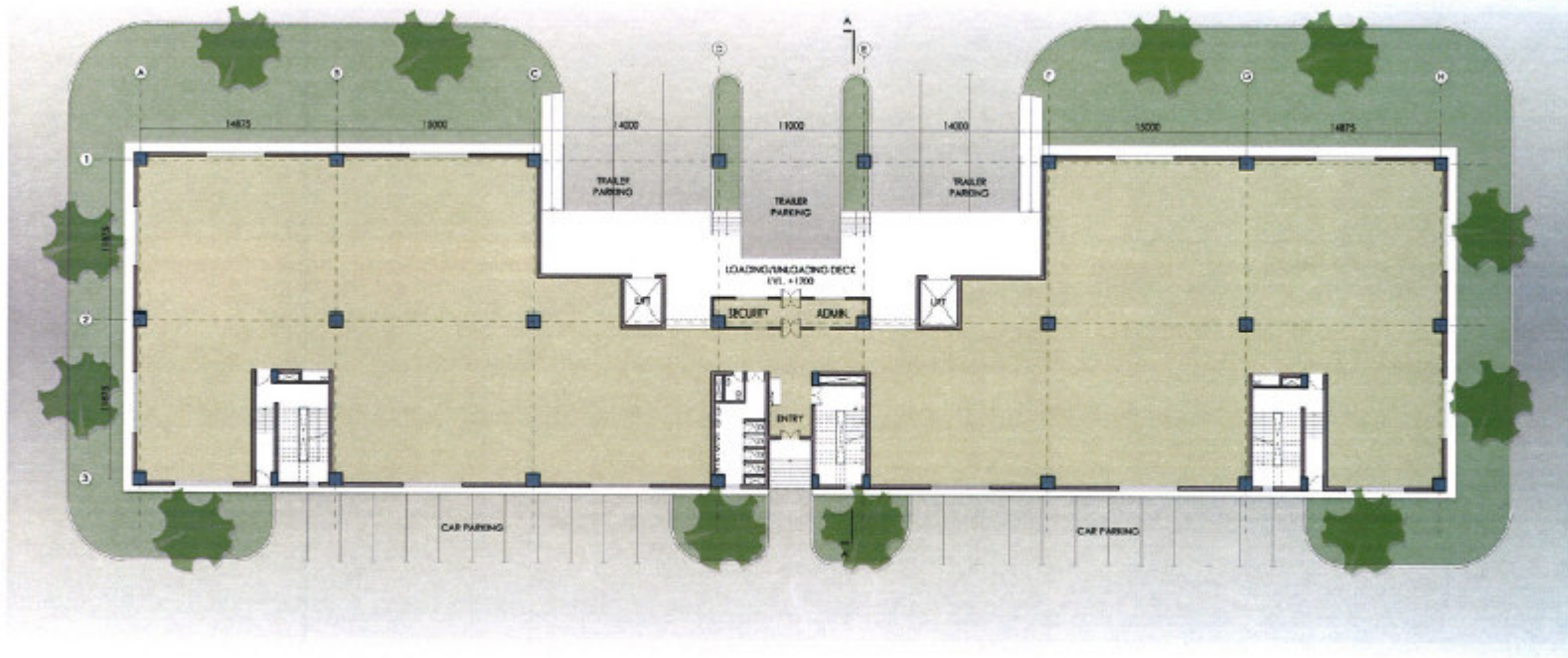
Site Details

- **Land area is 73 acres.**
- **At the intersection of Kona Expressway and NH-6**
- **Conveniently connected to NH-2 through NH-6.**
- **Driving time from CBD Kolkata (Park Street) – 15 minutes**
- **World Class Warehousing space and Truck Terminal.**
- **Dormitories for Truck Drivers.**
- **Eateries and auto spare shops.**
- **Commercial Office Space.**
- **Weigh bridge and fuel station.**
- **Approximately 720 numbers of Truck / Trailer / LCV parking**

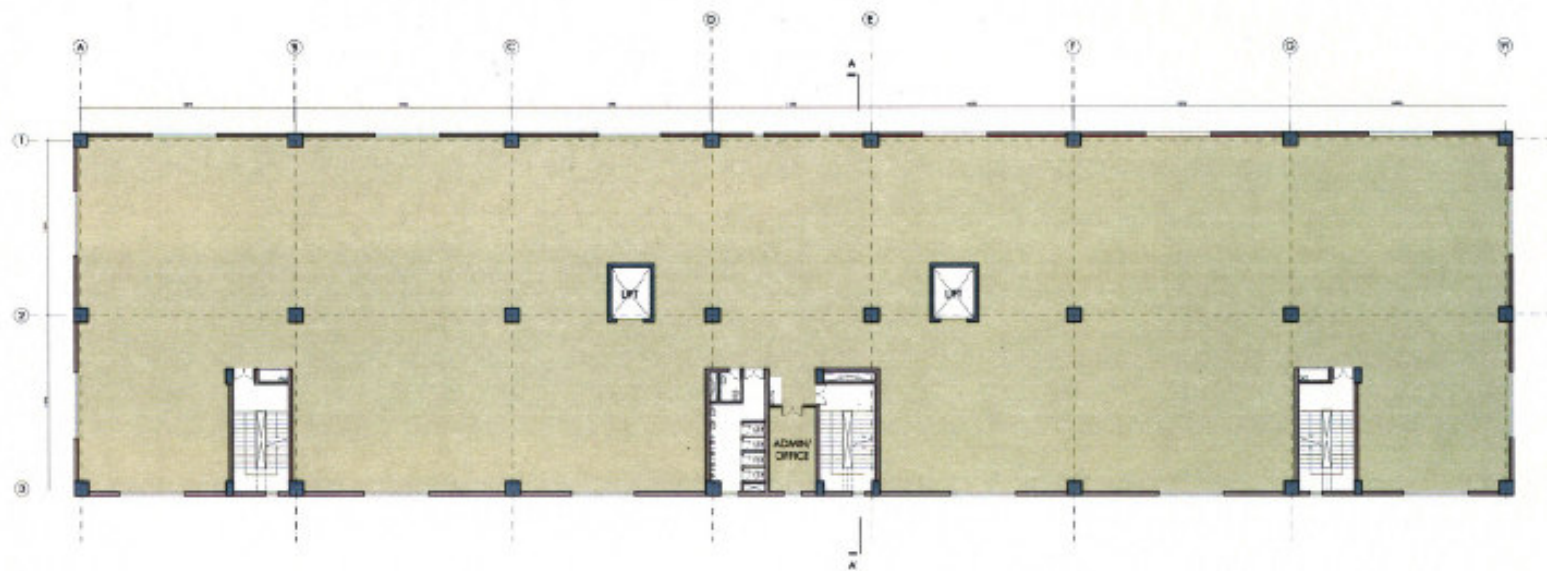




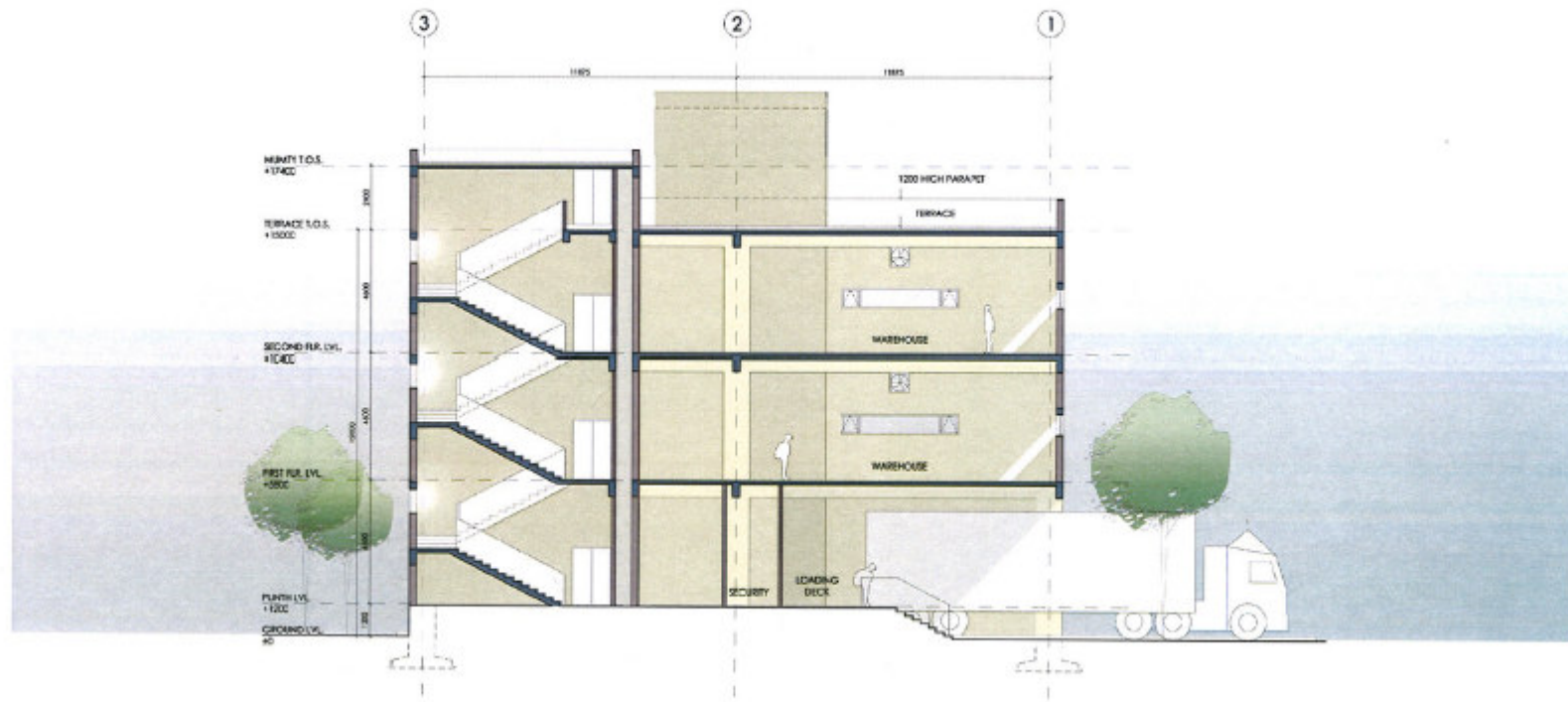
Artist Impression-WH12



Ground Floor Plan-WH12



Typical 1st & 2nd Floor Plan-WH12



SECTION AA'

Section-WH12



Actual Photograph-WH12

