

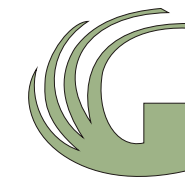
Shopping · Food · Entertainment



unitech[®]



Gardens Galleria
Rae Bareli Road, Lucknow



Gardens Galleria

Gardens Galleria is a combination of shopping & entertainment
that matches the best in the world.

Promoted by India's leading real estate developer and designed by
the architect who is behind global success stories such as
Pollok Shopping Centre, Glasgow and Coppergate Shopping, York;
Gardens Galleria promises to be a holistic shopping cum
entertainment experience.



Unitech’s corporate philosophy is built on trust and commitment, expertly merged with a keen insight into how people aspire to live. Today Unitech is one of the Top 50 construction companies in the world and a leader in property development and Real Estate in India. It is also the first real estate company in North India to achieve the ISO:9002 certification for Planning, Construction, and Marketing of Real Estate in the National Capital Region of Delhi.

Unrivalled expertise and experience in prestigious projects in India and abroad has given Unitech the advantage of an impressive track record of Commercial and Residential Complexes, Technology Parks, Retail and Theme Parks, Amusement Parks, Hospitality and Allied Technical Services, Transmission Lines and Schools.

Having earned an outstanding reputation for its residential and commercial developments, Unitech has forayed into the retail & entertainment sector and has some very noteworthy projects like Entertainment City in Noida and Metro Walk in Delhi to its name.

Entertainment City in Noida is India’s one of the largest retail & entertainment developments, with over 10,00,000 sq. ft. of gross leaseable area. On the other hand Metro Walk, which is sprawled over 62 acres, includes a world class Shopping Mall and a Theme Park called “Adventure Island”.



Global Business Park, Gurgaon

Unitech’s Retail Clients Include Some of India’s Leading Brands

At the Metro Walk, Delhi

- Pantaloon
- Biba
- Benetton
- Koutons
- John Player
- Madura garments
- Blackberrys
- Pizza hut
- McDonald's
- Ruby Tuesday
- Royal Sporting House

At The Great India Place, Noida

- Lifestyle
- Pantaloon
- Shoppers Stop
- Globus
- Big Bazaar
- Adlab Cinemas
- Raymonds
- Satya Paul
- Numero Uno
- Levis
- TGIF



The Close, Gurgaon

Unitech has strong working relationships with international consultants such as Pacific Landscape, USA; LDA, USA; Lumascape, Australia; WE-EF, Germany; OASE, Germany; DEW, USA; Crimsign, Singapore; WLS, Hongkong; MVA, Germany for its retail business.

Unitech’s upcoming retail projects are based in Kolkata, Bhubaneswar, Chandigarh, Dehradun, Bhopal, Lucknow, Hyderabad, Bangalore, Mysore, Kochi and Thiruvananthapuram.



Metro Walk, Delhi



Downtown Retail, Kolkata



The Great India Place, Noida

Unitech's Retail Projects



THE GREAT INDIA PLACE, NOIDA

- Part of 147 acres of mixed use development comprising entertainment, retail and hospitality
- Over 10,00,000 sq. ft. of GLA
- Designed by Callison Inc., USA
- 240+ outlets
- Annual footfalls: 10 mn. (Approx)
- Annual shopping: USD 300 mn. (Approx)



METRO WALK, DELHI

- Part of 62 acres of entertainment destination with an Amusement Park
- Over 200,000 sq. ft. of GLA
- India's first organized open air shopping centre
- Designed by FORREC, Canada
- 100+ outlets
- Annual footfalls: 3 mn. (Approx)
- Annual shopping: USD 75 mn. (Approx)



GURGAON CENTRAL, GURGAON

- A retail development of over 1.40 lac sq. ft.
- Designed by Callison, USA
- Multi-branded single store concept
- Operated by Future Group

The Architect

Allan Berwick is the mastermind behind the design of Gardens Galleria mall. He is an alumni of the Glasgow School of Art.

Allan has worked with a number of Architectural Practices in Scotland on a variety of building types including theatres, shopping malls, commercial offices, multiplex cinemas and large scale housing projects. During his career he has worked on a number of leisure and retail orientated projects in the UK, Russia, Indonesia and India.

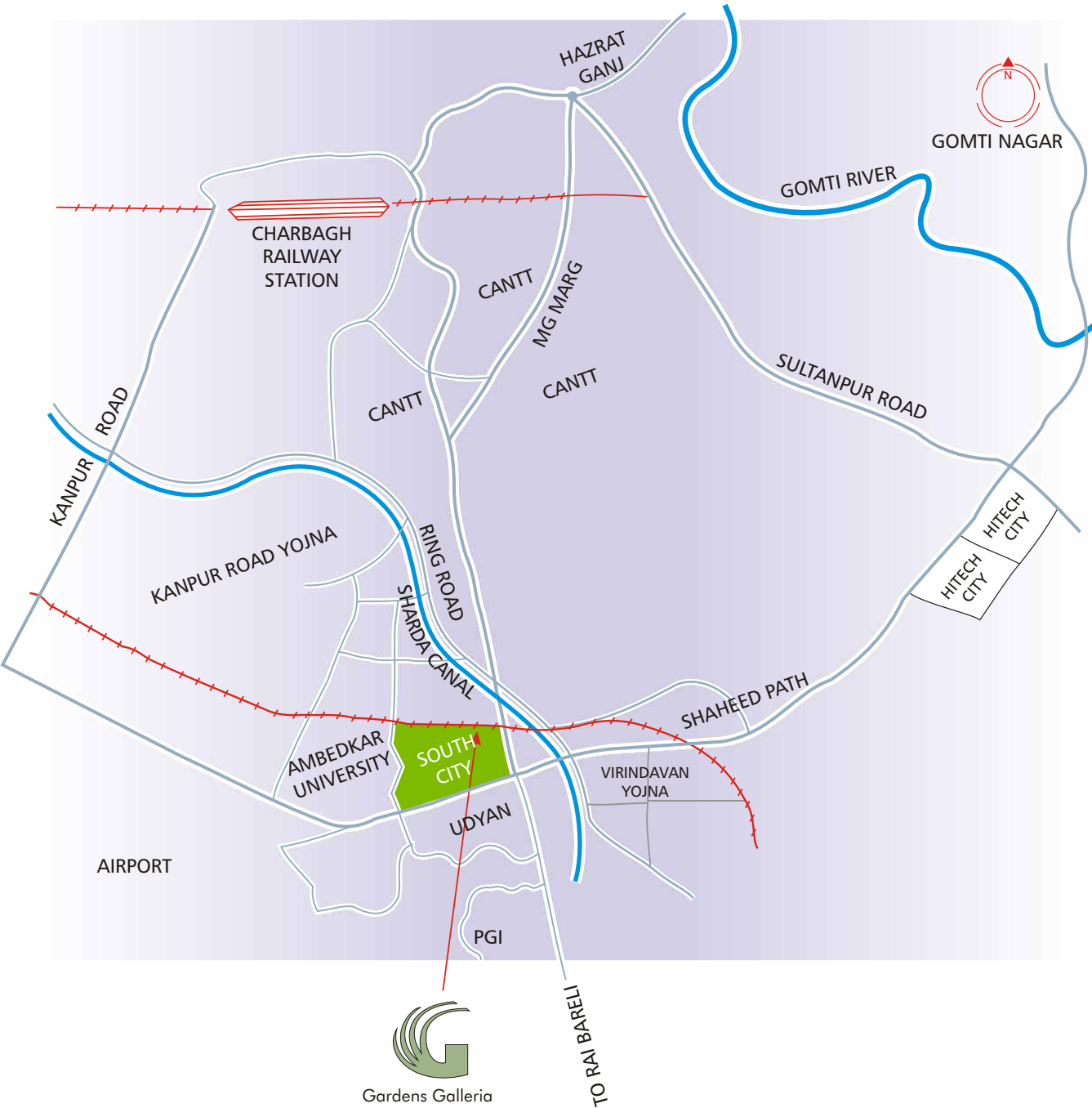
The Allan Berwick Experience

- Empire Theatre, Leicester Square, London
- Pollok Shopping Centre, Glasgow
- Coppergate Shopping, York
- Cinema Paradiso, Buenos Aires, Argentina
- Ozone Retail and Leisure Development, Oxford
- Multiplex Cinema, Mall of Indonesia, Jakarta
- Satyam Cineplex, Nehru Place, Delhi
- PVR Cinemas, Ambi Mall, Gurgaon



Proposed view of Gardens Galleria

Location Map



Location Advantages

- 8 kms from Charbagh Railway Station.
- Site abutting Ambedkar University.
- 3 kms before SGPGI.
- Connected to Amausi Airport via Shaheed Path Expressway.
- 6 kms from Alambagh Inter State Bus Terminus.
- 9 kms from Hazratganj.
- Large cash-rich catchment area of Alambagh and Kanpur Road (approx. 1.5 km.)
- No other cinema hall within a radius of 7 km.
- First shopping mall on the N.H. 24-A (Lucknow - Rae Bareli - Allahabad Road).
- Upcoming modern plotted development having a catchment population of more than 1.5 million.
- South City, Udyan, LDA Sharda Nagar, UPAWP Virindavan Yojna, Kanpur Road Yojna and other private townships in the vicinity.



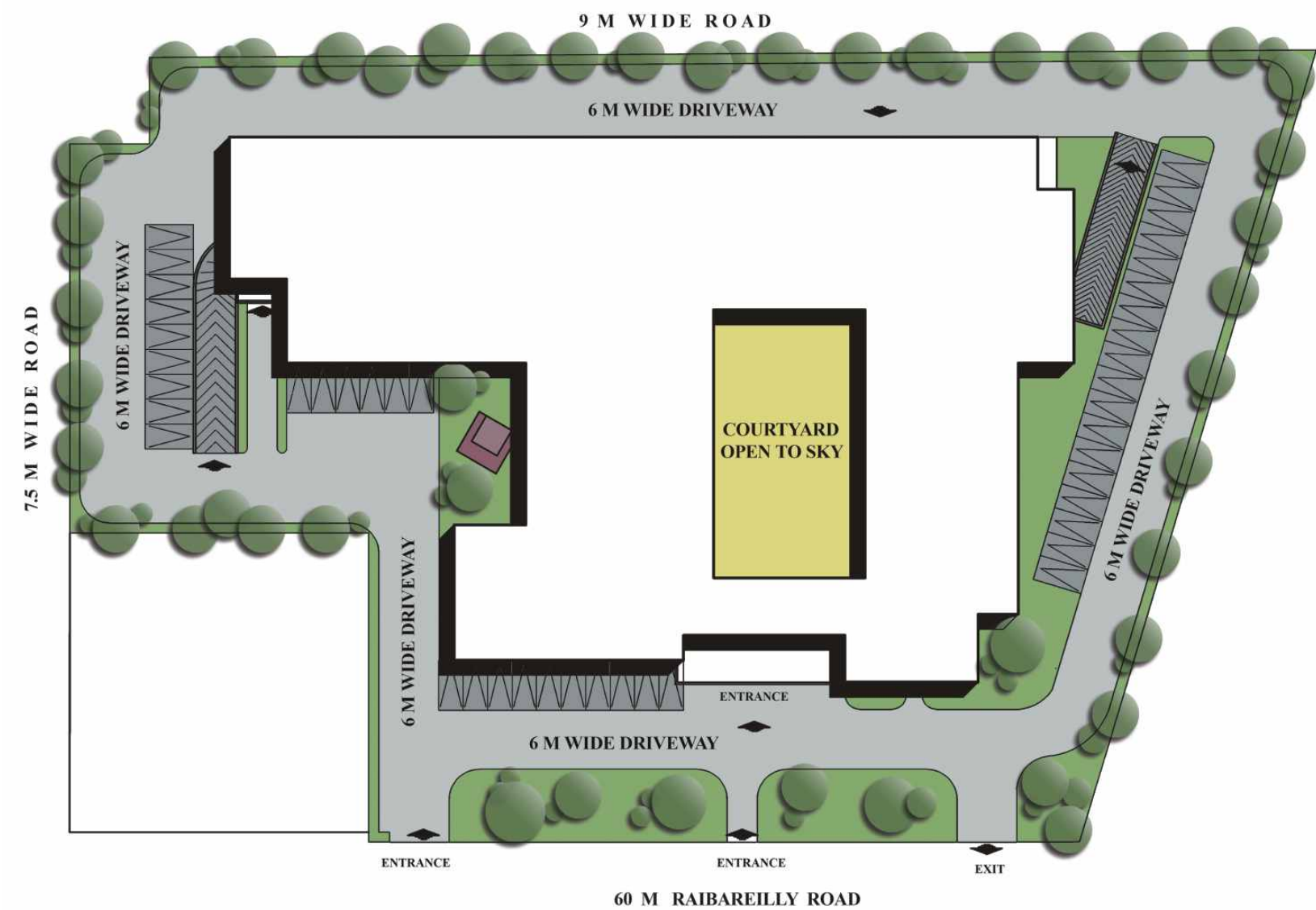
Project Highlights

- Only mall on Rae Bareli Road, Lucknow
- Over 1.5 lakh sq. ft. gross leasable area
- Designed by Allan Berwick of UK
- 3 floors of retail and F & B spaces
- Over 825 seats 4 screen multiplex
- Food court with outdoor seating
- Height of shops over 4 meters

Amenities

- Double basement parking space for more than 300 cars
- Round the clock water supply
- Professional property management
- Standby generators / 100% power back-up
- Fire protection system
- Central air conditioning system
- Separate passenger and service lifts / elevators and escalators
- Provision for public address voice communication system
- Loading / unloading facilities for goods

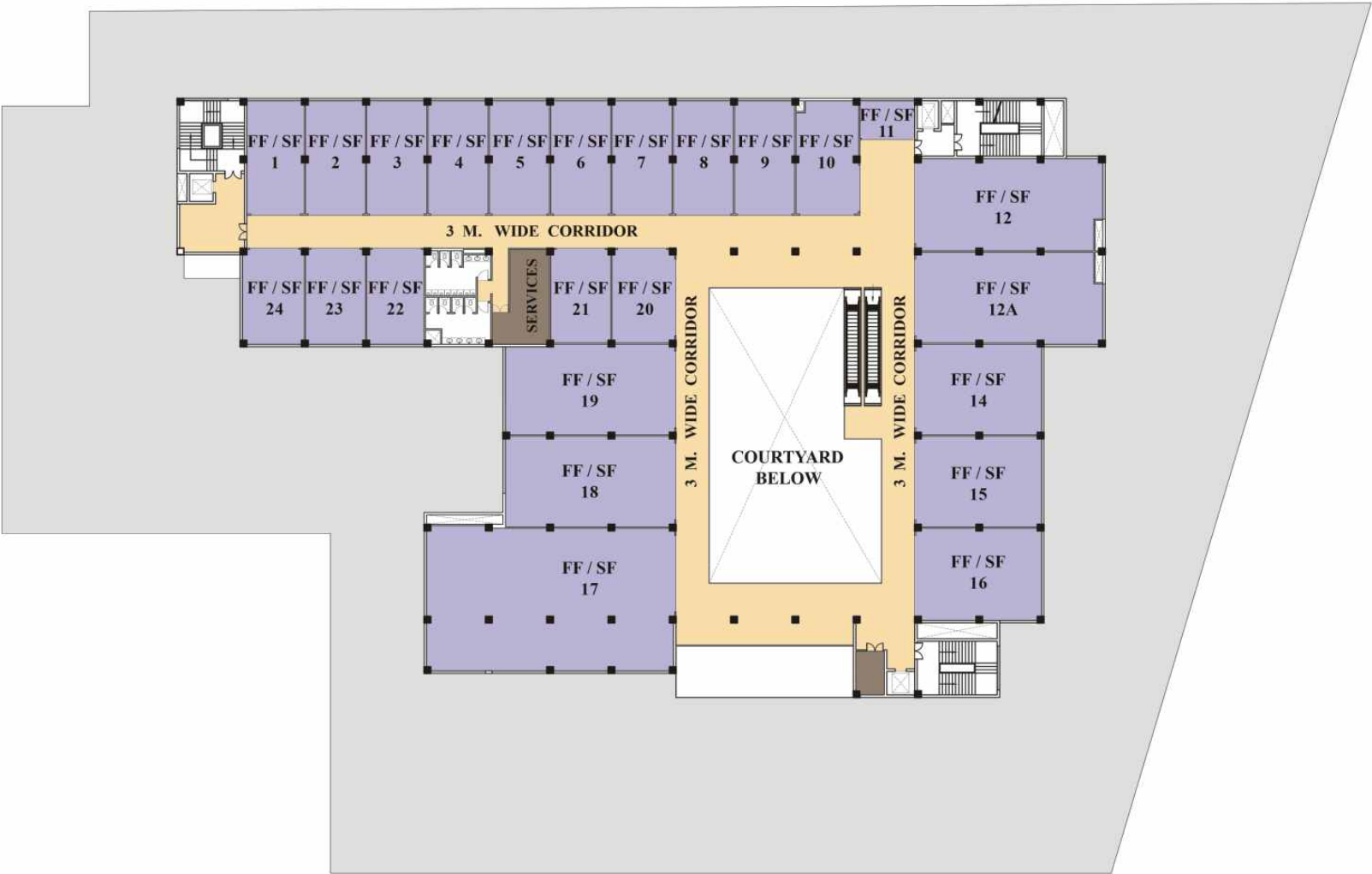
Site Plan



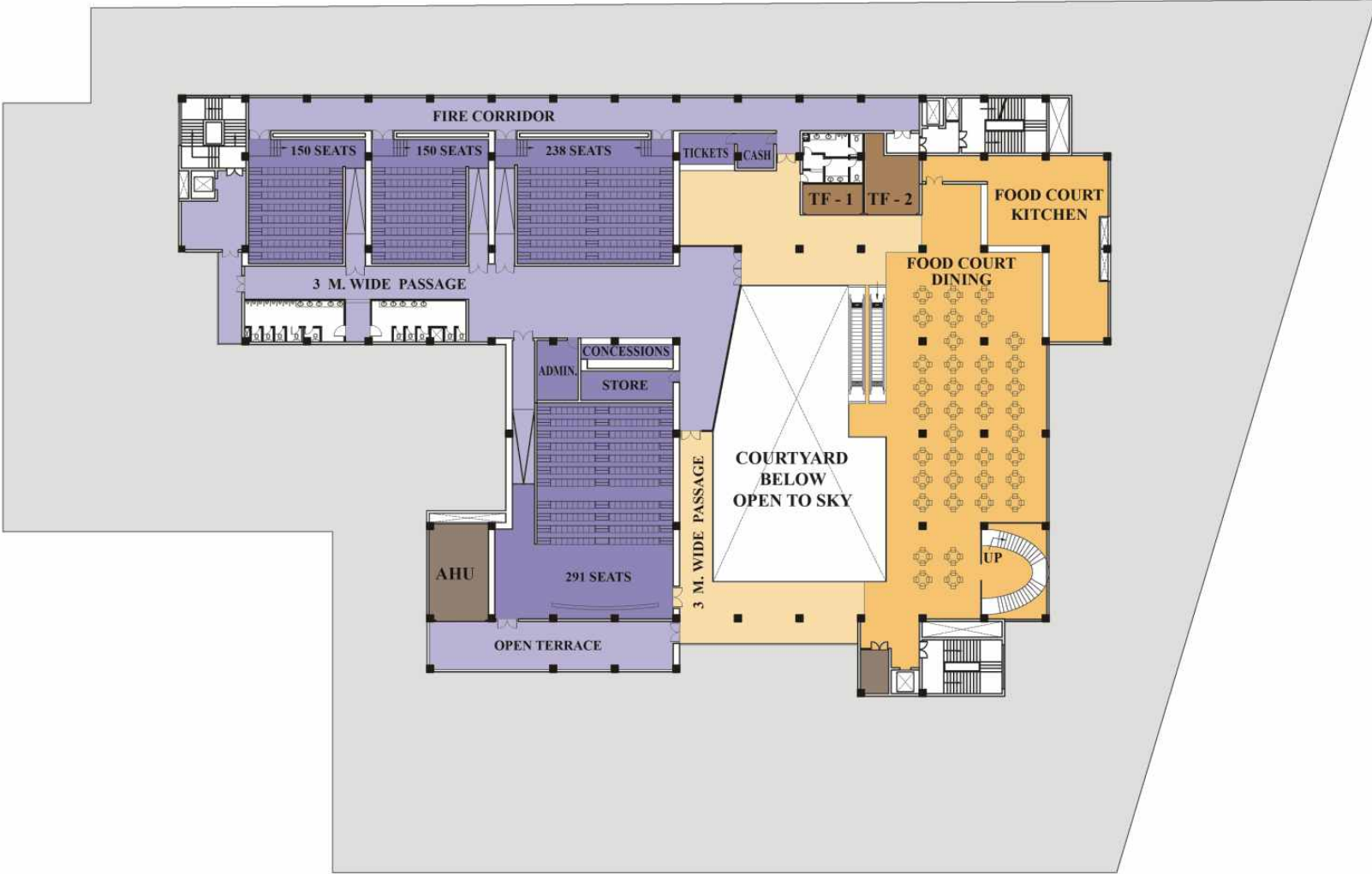
Ground Floor



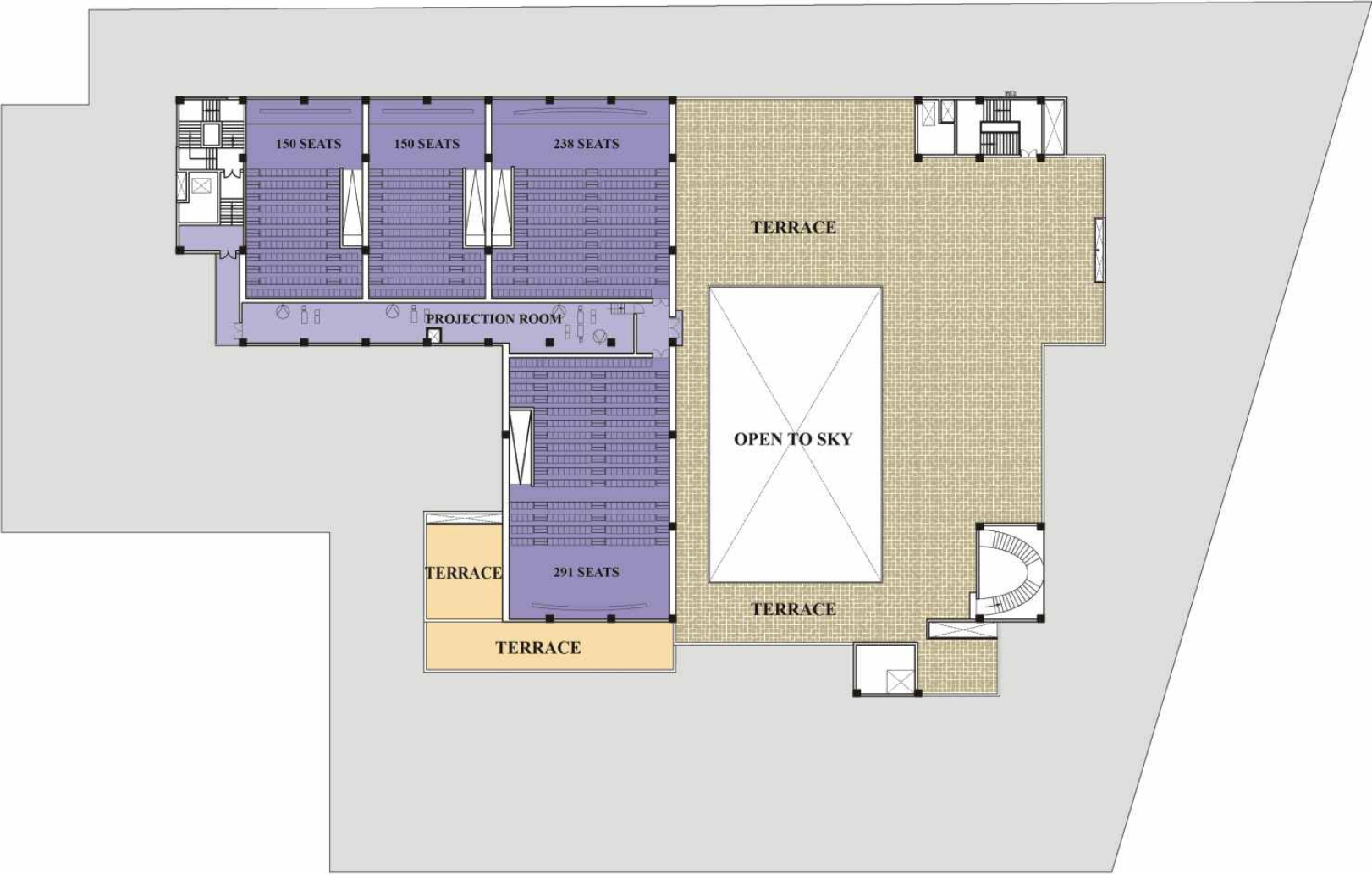
First & Second Floor



Third Floor



Fourth Floor



unitech[®]

Unitech Limited
3rd Floor, Y.M.C.A Building,
13, Rana Pratap Marg, Lucknow - 226001
Tel: +91-522-2209393/96/97 Fax: +91-522-2209343
Email: sales@unitechgroup.com

www.unitechgroup.com

The layout and building plans, specifications, elevations of the building(s) are tentative and are subject to variation. Unitech may effect such variations, additions, alternations deletions and/or modifications therein as it may, at its sole direction deem appropriate and fit or as may be directed by any competent authority. No complaint regarding design, layout or accommodation shall be entertained by Unitech.